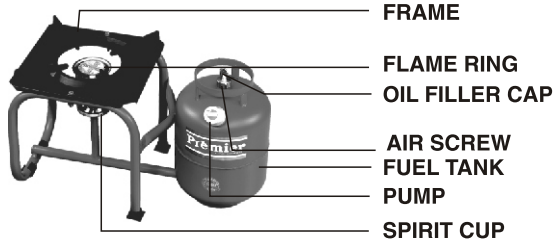


Premier

PRESSURE KEROSENE STOVE OPERATION & MAINTENANCE



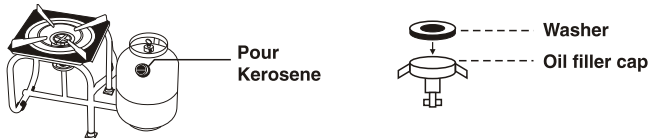
PREMIER A SAFE STOVE :

After extensive efforts and experimentation, we have designed this Kerosene Stove for a Safe and Fast cooking. This stove has undergone various air and hydraulic pressure tests upto 150 PSI and is guaranteed for any manufacturing defects. Kindly go through this instructions before operating the stove.

DIRECTIONS FOR USE :

Before lighting a new stove see all the parts are in proper position as per above. If there is any doubt kindly refer to your dealer.

TO FILL FUEL TANK :



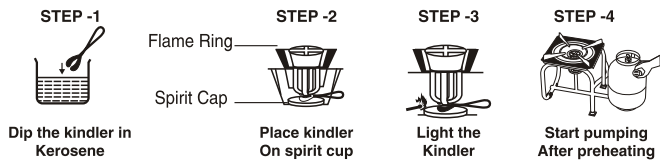
Keep the stove in flat position. Unscrew the oil filler cap and pour Kerosene slowly through a funnel with filter, till the bottom edge of the filler cap. Before replacing the filler cap check that the washer is in correct position. Tighten the filler cap and air screw to avoid leakage. Do not use any other fuel other than kerosene.

LIGHTING THE STOVE :

Check whether the oil cap and air screw are tight. Place the flame ring in position. Dip the kindler in kerosene and place it on the spirit cup and light the stove. Allow one minute for preheating the burner. Now slowly start pumping the fuel tank until enough pressure develops. (If pressure is not developing refer the instructions under pump maintenance)

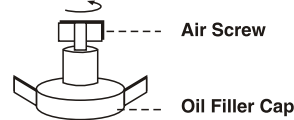
Do not pump before Pre-Heating

Once the flame is sufficient enough i.e., Blue Flame is reached, stop pumping (Take the kindler from the spirit cup). Now the stove is ready for cooking. Whenever there is drop in pressure, pump slightly to maintain even pressure.



Note : If Kindler is not supplied (certain models) soak a piece of cloth in kerosene then, place it on the spirit cup and light it for pre-heating the burner. Then follow the procedure as above. Blue Flame will be obtained only after all the kerosene in spirit cup is burnt.

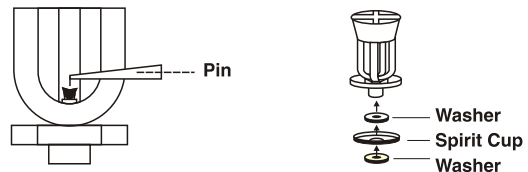
TO PUT OFF FLAME :



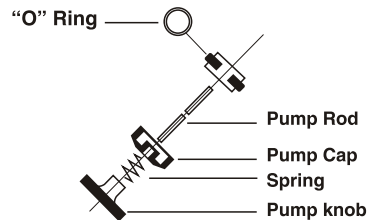
Unscrew the air screw on the top of the filler cap so that the pressure drops through the hole in the screw.

PERIODIC MAINTENANCE OF STOVES :

BURNERS : Due to impurities in kerosene the hole in the burner nipple may get clogged which gives interrupted burning. In that case clean the nipple hole using the pins supplied as spares. Do not loosen the burners.



PUMP



This model of pump develops high pressure. A rubber "O" ring operates inside the seamless pump pipe. Grease the pump tube or "O" ring frequently for smooth operation. If enough pressure is not developed; grease the pump or change the "O" ring. If still you

do not get the required pressure, the non-return valve inside the pump needs to be replaced. Check with a service centre.

To get optimum performance for your PREMIER Stove

- | DO's | DONT's |
|---|--|
| ✓ Check that all the components are in proper position as per design. | ✗ Do not tilt the stove when in operation. |
| ✓ In case of replacement of burners always use Quality burners. | ✗ Do not carry a lighted stove from one place to another as a matter of personal safety. |
| ✓ For maximum Fuel economy set the stove to blue flame condition. | ✗ Do not pump until enough preheating is done to the burners. |
| ✓ Always use kindler to light the stove. | ✗ Never keep a burning stove close to a gas cylinder. |
| ✓ Check Kerosene level before lighting the stove. | ✗ Do not touch the frame of the stove with bare hands when in operation. |
| ✓ Place the stove in a flat surface before operation. | |

SPARE PARTS :

1. Kindler - 1No.
2. Pin - 3Nos.
3. Pump Washer - 1 No.
4. Oil cap washer - 1 No.
5. Burner washer - 2 Nos.

